

- Saves Time
- Saves Money
- Increases Installation Options

**Product:** MediTrac<sup>®</sup> Corrugated Flexible Medical Tubing

**Location:** Henrico Doctors' Hospital, Henrico, VA

MediTrac<sup>®</sup> by OmegaFlex<sup>®</sup> continues its introduction into the market by providing innovation from end to end with another installation.

### Project Overview

OmegaFlex<sup>®</sup> the makers of MediTrac<sup>®</sup> partnered with Pure-Line Plumbing from Durham, NC on a medical vacuum system retrofit at Henrico Doctors' Hospital in Henrico, Virginia. The project included the removal of an existing oxygen only zone valve box and installation of a new O<sub>2</sub> and vacuum zone valve box. This newly added box is used to service 9 patient care rooms with updated oxygen outlets and newly added vacuum outlets. Existing oxygen piping was reused and a hybrid system utilizing copper pipe and MediTrac<sup>®</sup> corrugated medical tubing was installed for the vacuum lines. This hybrid system installation highlights the easy and efficiency of using MediTrac<sup>®</sup> CMT seamlessly with traditional rigid copper tubing materials.

### Typical Installation Benefits

- 55% Reductions in Total Installed Cost
- 80% Reductions in Brazed Joints (Fire Hazard)
- 70% Fewer Fittings (Less Potential Leak Points)
- 5 Times Faster to Install (Minimal Downtime and Maximum Patient Care)

### Installation Overview

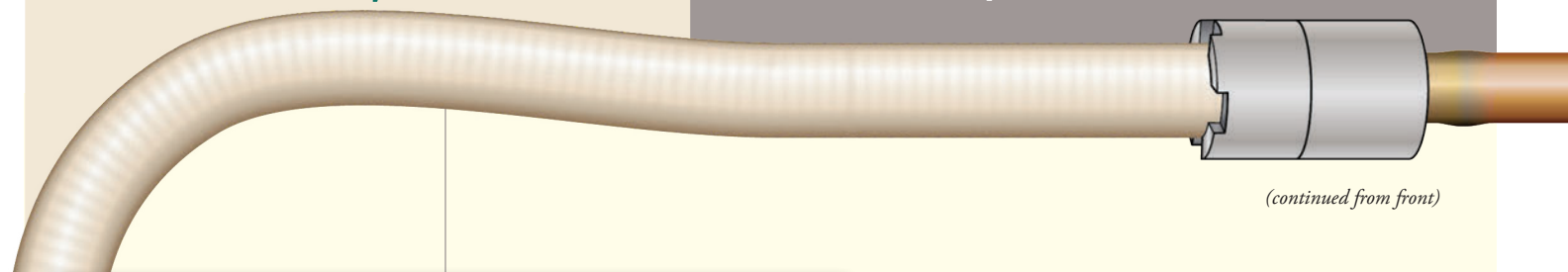
The tie in to the closest vacuum line was approximately 110' away from the updated zone valve box. 1" MediTrac<sup>®</sup> was used to navigate multiple changes in direction in a tightly packed space above the ceiling with 2 through wall penetrations. Routing of rigid copper piping in this location would have been difficult due to the limited space available for routing of the piping system and the brazing that would have been required for the traditional piping system.

The outlet from the zone valve box was connected to roughly 28' of 3/4" MediTrac<sup>®</sup> CMT. Piping was installed vertically up the wall cavity to the space above the drop ceiling and routed into the patient care area via a 3rd through penetration. At this point the piping system was transitioned from MediTrac<sup>®</sup> to rigid copper pipe that was routed in an "L" configuration in the ceiling of the corridor outside of the individual patient care rooms. A total of six (6) brazed copper tees were installed to provide seven (7) drops off the copper piping to service all nine (9) patient care rooms.

In total there was roughly 110' of 1" and 185' of 3/4" MediTrac<sup>®</sup> CMT installed in this project in conjunction with approximately 68' of 3/4" rigid brazed copper.

*(continued)*

*OmegaFlex<sup>®</sup> the makers of MediTrac<sup>®</sup> partnered with Pure-Line Plumbing from Durham, NC on a medical vacuum system retrofit at Henrico Doctors' Hospital in Henrico, Virginia.*



*(continued from front)*

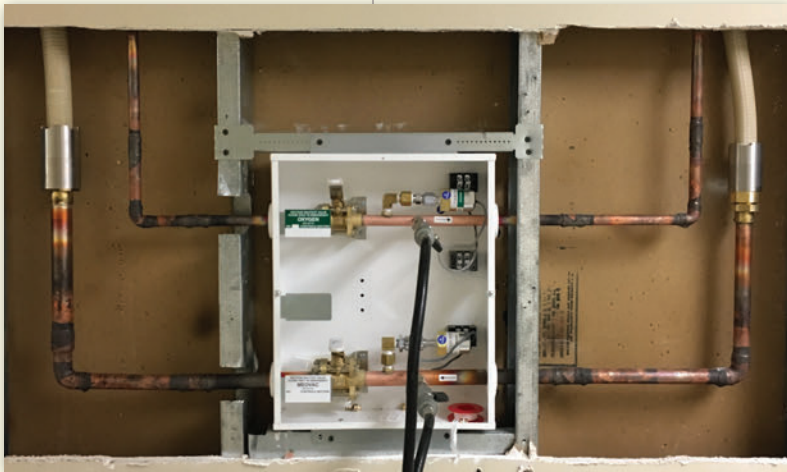
### Installation Highlights

The initial 110' run from the existing vacuum line to the new zone valve box was pulled and roughed in in 40 minutes. That time included the drilling of 2 through penetrations. Final tie in took the total install time of this section to roughly 1 hour. It was estimated that to complete this same run with rigid copper piping would have taken at least 4.5 hours and required a large number of braze joints to navigate the tight installation location.

While most of the tie-ins from the copper line to the patient care rooms were not very long, ranging from 15' to 35', the reduction of overhead work to fit and braze copper ells and couplings saved on installation time. That savings on installation time allowed the job to be completed in the short window available for the installation.



*3/4" MediTrac<sup>®</sup> CMT drop to patient care room from rigid copper main.*



*1" MediTrac<sup>®</sup> CMT connection to zone valve box for vacuum.*

- Overall, this project went from days to hours for completion
- Contamination possibility was greatly reduced
- There was a significant reduction in intermediate joints
- The hospital was able to return to service and back to providing patient care in a short amount of time